

Kingsway

---

Hove



We know just the place...



### Seaside Splendour

A fantastically appointed first and second floor duplex apartment with considerable character situated in one of Hove's most sought after and premier locations. With glorious direct sea views and boasting in excess of 1340 square feet, this apartment is the epitome of style and elegance.

This elegant building with sweeping sea views is a beach lovers dream. The large reception room has a wealth of period features with the most wonderful floor to ceiling windows, decorative cornices and mouldings along with a marble fireplace. French doors lead out onto a magnificent iron balustrade balcony with dreamy vistas. A perfect space to relax, unwind and watch the world go by.

Original sliding doors with decorative architraves lead to the spacious dining area. The kitchen is light and airy, it has been fitted with contemporary units with some integrated appliances. Leading off from the kitchen is a useful utility/laundry room.

The upper floor of the apartment offers a spacious master bedroom suite with a contemporary styled wet room. An additional two bedrooms both offer sea views also and have access to a family bathroom.

This truly is a super home in a prime location; presented to a high standard the property is "move-in" ready with three bedrooms, two bathrooms, two reception rooms and a balcony with a view.

Kingsway is located on Hove seafront, with a parade of shops nearby, water-sports activities at the Lagoon and the popular Wish Park a mere stone's throw away. The apartment benefits from being close to Church Road with its bustling cafe culture and many popular restaurants and bars and both Hove and Portslade mainline stations.



3



2



1



C



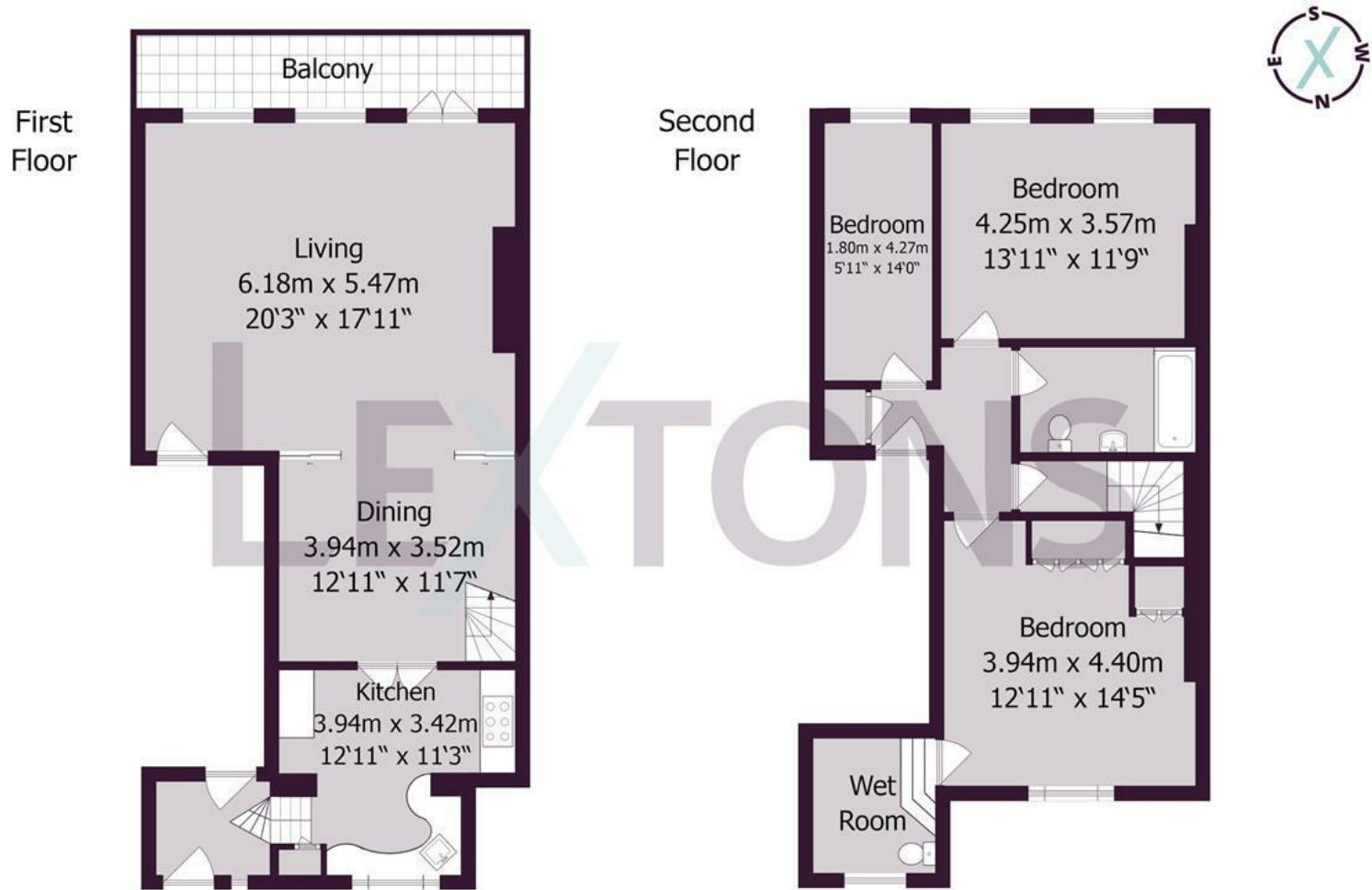




What the owner says...



This has been a beautiful home to live in. You will never tire of the views outside or the stunning architectural features inside. It is south facing so light AND warm – all year round and the views ..... It is like living with a piece of evolving art in front of your window. You might struggle to keep your eyes on your computer living in this space !!!!



Whilst every care has been taken to ensure accuracy, dimensions are approximate and for illustrative purposes only.

Created by Property Photography UK for Lextons. All rights reserved.

Meet us here...  
 174 Church Road  
 Hove  
 BN3 2DJ

We aim to make our particulars both accurate and reliable. However they are not guaranteed; nor do they form part of an offer or contract. If you require clarification on any points then please contact us, especially if you're traveling some distance to view. Please note that appliances and heating systems have not been tested and therefore no warranties can be given as to their good working order.

# LEXTONS

01273 56 77 66